

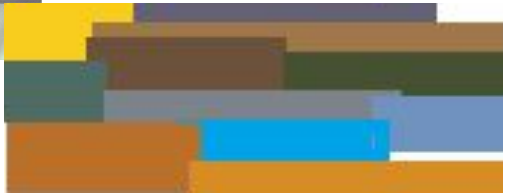
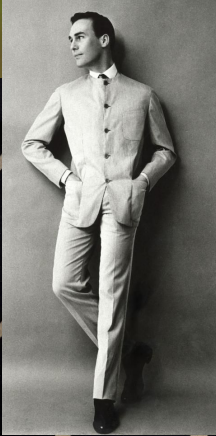
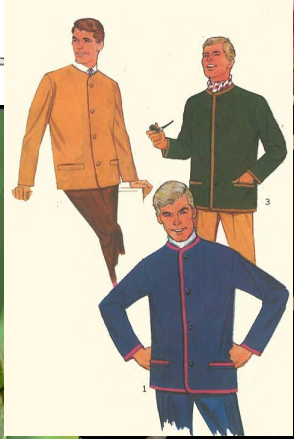
# Evocative Images



Color Palette



# Rene Gallimard



# Rene Gallimard



1/1- Bathrobe w/ Basic Tux Layers Underneath

1/3- Pinkerton Capt. Cap

1/5- Tuxedo

1/7- Casual Window-Pane Suit, Blue Shirt, Orange Tie

1/9- Striped Pajamas (On Stage)

1/10- Tan Pinstripe Suit, Gold Shirt, Brown Tie



1/12- Tuxedo Look

Act 2- Tan Nehru Suit Jacket, Green Pants, Orange Shirt, Blue Tie.

3/3- Butterfly Robe (On Stage)



# Song Liling



# Song Liling



- 1/1- Traditional Hanfu
- 1/5, 1/11, 2/6- Peking Opera Butterfly Costume
- 1/6- Butterfly Opera Wedding Costume
- 1/8- Peking Opera Butterfly Costume w/ Harem Pants and T-shirt underneath.
- 1/9, 1/13- Gold Sheer Robe with Nighty
- 1/10- Black Feathered 20s Dress, Gold Heels, Pearls
- 2/2- Gold Cheongsam w/ Beaded Bird
- 2/9- Mao Suit, Black Shoes, Socks, Undershirt
- 2/11- White and Gold Wedding Hanfu with Lace Birds
- Act 3- Grey 3 Piece Suit, Gold Shirt & Tie, Shoes



# Marc/ Man #2/ Consul Sharpless

1/2- Man #2- Grey Suit, White Shirt, Watercolor Tie, Black Shoes.

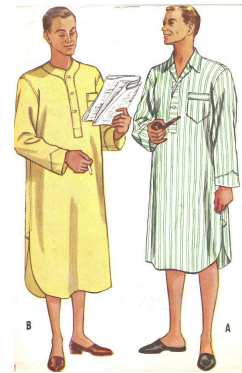
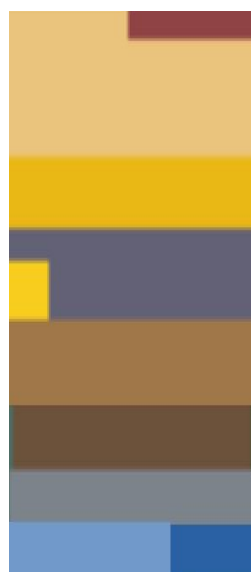
1/3, 1/5- Sharpless Hat

1/4, 2/11- Marc Casual- Plaid Pant, Turtleneck, Brown Shoes.

1/6- Marc Formal- Yellow Tux Coat, Black Tux Pants, White Shirt, Black Bowtie, Black Shoes.

1/9- Marc Nightcap- Night Shirt, Cap

1/11- Bureaucrat Look- Blue Suit, White Shirt, Brown Tie, Brown Shoes.



MAN #2

# Renee/ Woman at Party/ Girl in Magazine

1/2- Woman at Party- Black & Gold Off-The-Shoulder Cocktail Dress, Black Shoes

1/5- Girl in Magazine- Fur Stool/Shawl, Heels

1/6- Renee Professional- Black Gown with Shoulder Flare, Heels, Jewelry

2/6- Renee Revealing Gown- Green Backless Gown, Black Heels, Jewelry



WOMAN AT PARTY

# Suzuki/ Shu-Fang/Comrade Chin



1/5- Suzuki- Grey and Black Kimono or Hanfu

1/10- Shu-Fang- Black Cheongsam, Black Heels

2/4- Comrade Chin- Grey Mao Suit, Black Shoes



M. BUTTERFLY



COMRADE CHIN



# Helga



1/5- Casual Look- Patterned Flared Dress, Belt, Heels, Jewelry.

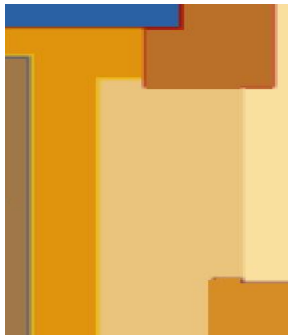
1/9- Chinese Inspired Silk Robe, Heeled Slippers.

M. BUTTERFLY ACT 2/ SCENE II



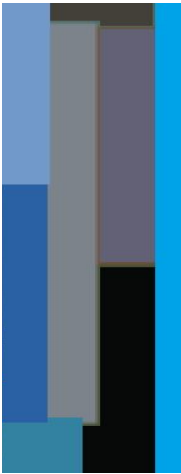
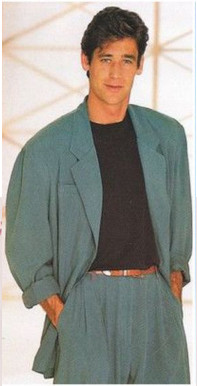
2/5- Casual Look #2- Solid Pencil Skirt Suit, Heels, Jewelry.

2/11- Wet Look- Tan Dotted Blouse, Orange Short Dress, Brown Heels, Blue Hat (Soaking Wet)



HELGA

# M. Toulon/ Man #1/ Judge



1/2- Man #1- Blue Pleated Pants and Suit Jacket, Navy Textures Sweater, Brown Shoes, Brown Belt.

1/6- Toulon Formal Wear- White Dress Shirt, Black Bowtie, Blue Brocade Tux Jacket, Black Tux Pants, Black Shoes.

2/3- Toulon Work Wear- Blue Plaid Double Breasted Suit, White Dress Shirt, Solid Tie, Black Shoes.

3/1- Judge- White Dress Shirt, Black Tie, Black Judge Robe, Black Slacks, Black Shoes.



# Kurogo Dancers

M. BUTTERFLY

ACT I / SCENE 8



KUROGO DANCERS



1/8- Chinese Peking Opera Dancers- Blue Silk Tang Suit, Head Wrap, Flats.

2/9- Black Mao Suit, Black Shoes, Black Cap w/ Red Star

All Else- Kuroko Costume- Black Garments, Black Gloves, Black Socks, Black Face Mask

